

## 2011–2012 Exhibitions

**September 2 – October 7, 2011**

Matthew Davey: *Shadow and Light*

Matthew Davey's exhibition includes drawings, paintings, and sculptures. His powerful figurative works, though classically inspired, are provocative and provide many psychological layers for the viewer to consider. They encourage honest explorations of the human soul, and of our relationships inward and outward.



Honey Kiss, Vinegar bronze and stone

**October 17 – December 9, 2011**

*Utility and Grace: Contemporary Ceramics from the Bruno and Mary Moser Collection & Don McMasters (Wabash '53): The Collector's Vision*

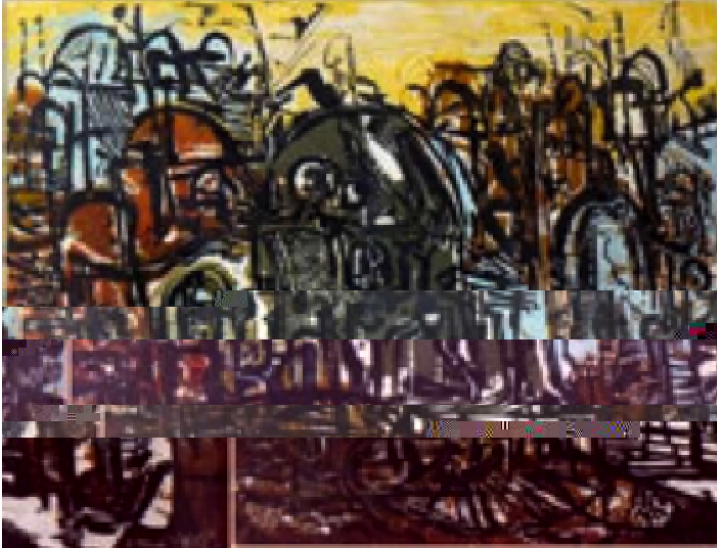
Bruno and Mary Moser are passionate collectors of contemporary pottery. Over a period of 35 years, the Moser's have amassed an important collection exceeding 1200 objects. In 2006, *Ceramics Monthly* published a feature article covering the Moser collection.



Larry Spears, tea pot, stoneware & mixed

*Don McMasters '53: The Collector's Vision*

For decades, alumnus Don McMasters, Wabash Class of 1953, has been an ardent supporter of the Art Department's Permanent Collection of Contemporary Art. Don's combined gifts exceeding 200 objects nearly doubled the collection's holdings, greatly expanding its depth and its capacity as a teaching resource, and provider of cultural enrichment to the Wabash and local communities.



Rudy Pozzatti, Carnavale, woodblock print

**January 20 – February 17, 2012**

Anne McKenzie Nickolson & Richard Emery Nickolson: *Themes and Variations*

In her textiles, Anne McKenzie Nickolson explores the use of layered patterns of stripes to create visual and physical structure, providing a rich and complex visual experience. The discovery of shapes, color changes, multiple ways of seeing and multiple layers of content serve to surprise the viewer. Her work ranges from the purely abstract, geometric pieces in which shapes and colors dance across the surface, to figurative works. Anne is an Instructor at Art Institute of Indianapolis.



Self-Reflection, pieced, appliquéd cotton

From *Solomon's light* to *Baghdad's back door*, Richard Emery Nickolson's series of drawings and watercolor paintings seeks to explore and synthesize a variety of responses to both contemporary issues and historical references. His recent work has been drawn from, and heavily influenced by, a variety of international travels during the last 15 years, including the Breton landscape and l'architecture industrielle. Richard is Professor Emeritus, Herron School of Art and Design, Indiana University, Indianapolis.

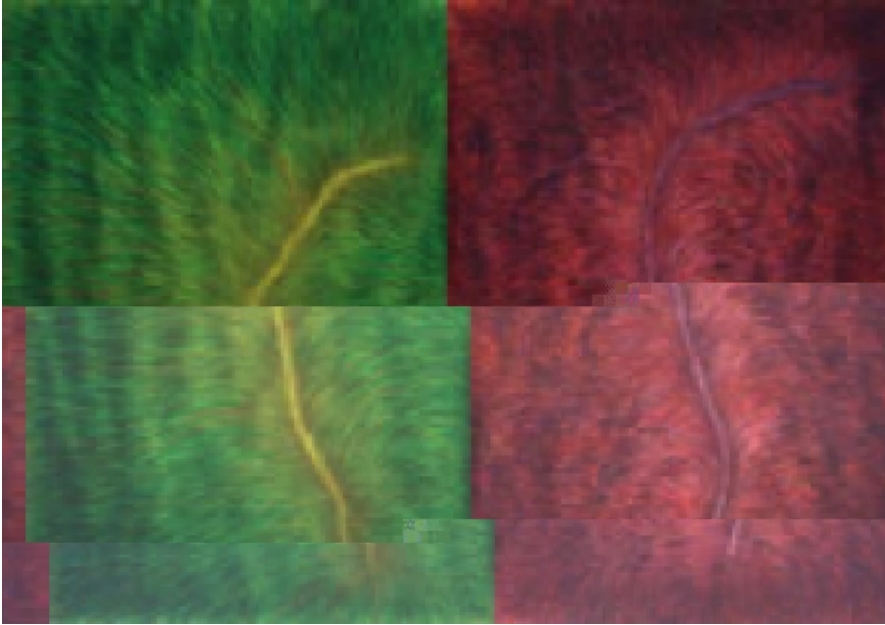


An American Frame, watercolor

**February 27 – March  
30, 2012**

Io Palmer: *Workspace*

*Workspace* includes mixed media pieces created within the last four years that subtly explore issues of class, performance, and public and private identity. Using a range of materials including drawing, ceramics, and fabric, *Workspace* incorporates crafted and appropriated objects to create hybrid new materials. By rearranging a multitude of objects, this work reflects and addresses the complex nature between class constructs, social language, and cultural criticism. Ms. Palmer is currently assistant professor at Washington State University in Pullman, Washington.



Dyed and Parted (1), watercolor, 2011

**April 16 – May 13, 2012**

2012 Senior Art Majors Exhibition

This exhibit includes a wide range of traditional and digital media by Kelvin Burzon, Brandon Doebler, Matt Levendoski, Sean Parchman, Lucas Tellez, Yangnan Liu, and Evan Bayless. The Wabash 2012 Senior Art Majors Exhibition represents a final rite of passage for these talented men who have dedicated their academic focus to the visual arts. Here they present the achievements of their intense final year of studio work.